



Mills County 4-H Newsletter

4-H Meeting

The first 4-H Meeting of the new year will be held on Monday, September 12th at 6:00 p.m. at the Mills County State Bank Community Room. At this meeting we will be electing officers for the 4-H year. If you plan on running for a 4-H office you must attend this meeting and plan on being an active 4-H participant this year.

The community service project for September will be to bring can goods for the Community Food Drive. You can bring your can goods to the meeting or to the Extension Office.



4-H Re-Enroll Notice

Notice: September 1 begins a new year for all 4-Hers. Everyone - including 4-Hers AND Adult Leaders are reminded that everyone MUST re-enroll each year. NEW this year will be the collection of \$20 per child as a Participation fee. Several e-mail messages and notices have been posted within the last several months regarding this new fee. Beginning in September and October, you need to make sure that you have filled out a NEW AND UPDATED enrollment form and paid the \$20 per child Participation Fee. These enrollment forms verify that you are an active 4-H member and that your mailing address, e-mail address and other important information is correct. All Adult leaders and adult volunteers must fill out new forms and be prepared to background checks, which are required now through the State 4-H office. Background checks are good for only 3 years. Registration can also be done on 4-H CONNECT. This process will also help to update our 4-H enrollment program, and is available online throughout the year. If you have NOT filled out a new enrollment form, your name could be dropped from the mail-out list as well as not able to participate in ANY 4-H sponsored events including Stock Shows and state 4-H sponsored events. PLEASE see additional note below. This fee will include all programs from September 1st, 2011 thru August 31st, 2012. You can sign up thru 4-H CONNECT at

<https://texas.4honline.com/Login.aspx?434850372944385D5E0F390D>

Texas AgriLife
Extension Service

September 2011

Inside this issue:

4-H Meeting	1
4-H Re-Enrollment	1
Quality Counts Verification	2
State Swine Validation Tag Orders	2
HOT (Waco) En- tries	2
No Pass No Play	3
4-H Livestock Tid- bits	3
Sheep & Goat & Heifer Validation	3
District 7 4-H Food Show	3



Quality Counts Verification For 2012 Major Livestock Shows

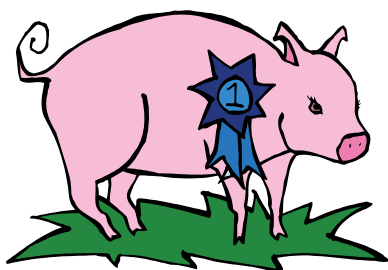
Starting in 2012 ALL youth livestock exhibitors (4-H & FFA) will be required to complete an online Quality Counts Certification PRIOR to completing their livestock entries in the fall! Upon passing the online test, each youth will be assigned a verification number which MUST be used on their livestock entries. Quality Counts Verification is now active and ready to be used! Moving forward into the 2011-2012 Major Show Season, Quality Counts Verification will be a part of the process for entry in all major shows. This means youth exhibitors will need to demonstrate their knowledge of the Six Pillars of Character and the Eight Core Concepts presented in the Quality Counts Curriculum. To do this, they will need to pass an online test on the website (<http://qualitycounts.tamu.edu/>) and acquire a Quality Counts Verification number. Things you need to know about Verification:

****2012 - All Major Livestock Shows in Texas will require Quality Counts Verification at the time of entry - This means youth will need to be verified prior to entry in the fall of 2011. A Verification number is obtained by answering 80% of the questions correctly on an online test. The Quality Counts website <http://qualitycounts.tamu.edu/> will serve as your portal to the online test, Verification records, and educational resources related to Quality Counts. From this website, you can access all of the Quality Counts curriculum and various Powerpoint presentations for use with 4-H livestock exhibitors, 4- H leaders, and local support groups and organizations. It is our suggestion to do this sooner, rather than later so you will be "up to date" and ready for livestock entries.



This MUST be done... There are no exceptions!!!

State Swine Validation Tag Orders



If you plan on showing a market barrow in a major livestock show or a registered gilt in the Texas Star Show in San Angelo, it is now time to order your state validation tags. Tag orders will be due by Wednesday, September 28th. Tags will cost \$8.00 per tag and must be paid for when you order your tags or your order will not be submitted.

HOT (Waco) Entries

Entries for the HOT Fair in Waco will be due by Wednesday, September 14th.

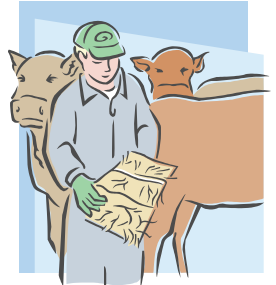
No Pass No Play



Just a little reminder to keep your grades up. If you plan on participating in an activity under Mills County 4-H, we will be following UIL Guidelines.

4-H Livestock Tidbits

1. If you need assistance locating a livestock project, please contact our office and we can assist you.
2. Please remember that your projects are your projects. While a project does involve assistance from your family, it is not your parents or grandparents project.
3. If you plan on showing under the supervision of Mills County 4-H, you need to be an active member participating in the Mills County 4-H program. If you are an active participating member of your school FFA program and not the 4-H program, you need to be showing under that FFA program.
4. If your animal goes to a stock show, you need to go with that animal and show that animal.
5. Breeding sheep ownership date for animals to be shown in San Angelo, San Antonio and Houston stock shows is October 1st.
6. San Angelo stock show has added a hair sheep class. All market lambs must be validated with TLBA tags.



Sheep & Goat Validation & Heifer Validation

The Mills County Sheep, Goat and Heifer Validation will be held on Monday, October 24th for all county and state market lambs, breeding sheep, market goats and breeding goats.

District 7 4-H Food Show



If anyone is interested in participating in the District 7 4-H Food Show held in Abilene on Saturday, November 19th and being part of the Foods and Nutrition Project, please let our office know.

**Mills County AgriLife
Extension Office**

PO Box 726
Goldthwaite TX 76844

Tom Guthrie
Phone: 325-648-2650
E-mail: t-guthrie@tamu.edu

**Please contact us with any
questions.**

**Mission of the Texas 4-H and
Youth Development Program**

**Prepare youth to meet the challenges of
childhood, adolescence and adulthood,
through a coordinated, long-term, pro-
gressive series of educational experi-
ences that enhance life skills and de-
velop social, emotional, physical and
cognitive competencies.**

4-H Motto.....

To make the best better